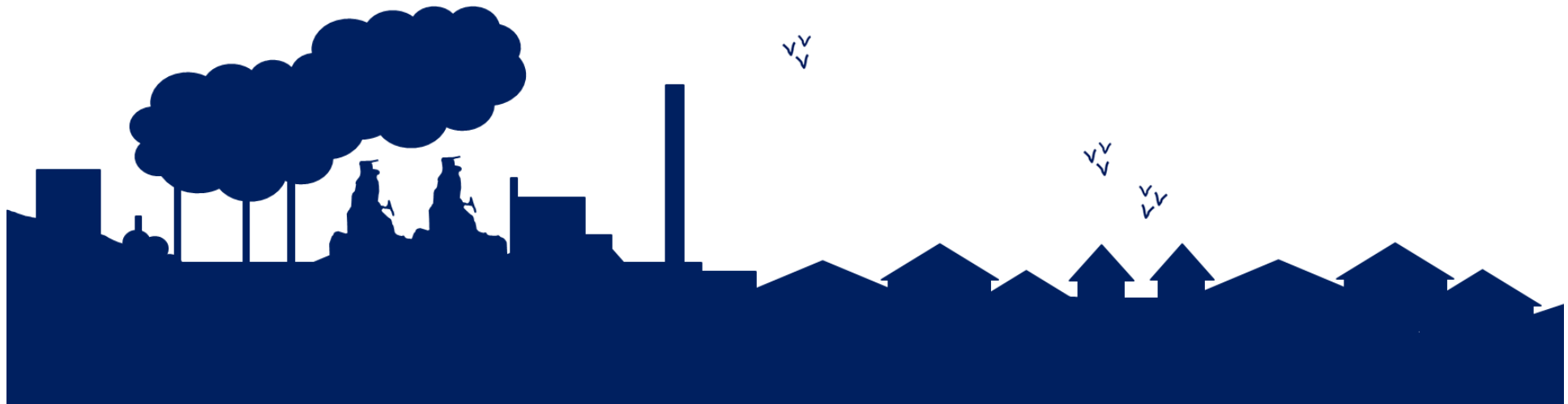


# Community Resilience and Engagement Strategy



# What is the strategy?

Emergency  
Planning  
Team

Neath Port Talbot  
Castell-nedd Port Talbot  
County Borough Council Cyngor Bwrdeistref Sirol

## COMMUNITY RESILIENCE AND ENGAGEMENT STRATEGY

Enable communities to be prepared before, during and after an emergency

Created by: Emergency Planning Team  
Date: April 2017  
Version Number: v0.1

PREPARING FOR EMERGENCIES  
WHAT YOU NEED TO KNOW

- Public facing document
- Aim is to improve community resilience to emergencies
- Outlines how the team plans to develop community resilience
- Explains community resilience + the benefits etc.
- Best practise

---

# What is Community Resilience?



**“Communities using local resources and knowledge to help themselves during an emergency in a way that complements the local emergency services.”**

UK Cabinet Office, 2014

Community resilience involves:

- Awareness of local risks
- Planning / preparing at community level
- Using local skills, knowledge + resources
- Reduce impacts

# Why do we need a strategy?

<b>H1N1 influenza outbreak (swine flu)</b>	2009
<b>North Sea storm surge</b>	December 2013
<b>Flooding on the Somerset Levels</b>	Winter 2013 - 2014
<b>St Jude's Day storm</b>	28 October 2013
<b>Heavy snow and cold temperatures</b>	Winter 2010 - 2011
<b>Heatwave</b>	Summer 2003
<b>Foot and Mouth disease</b>	2001
<b>Avian flu (bird flu)</b>	2007
<b>Sea Empress disaster</b>	February 1996

# Local Incidents



H1N1 Influenza Pandemic, 2009

Severe Weather, 2010 - 2011

Gleision Mine, September 2011

Ystalyfera Landslide, December 2012

Measles Outbreak, 2012 - 2013

Severe Weather, 2013

Severe Weather, February 2014

Egan's Fire, July 2016

Storm Angus, November 2016

Ystalyfera Landslide, February 2017

---

# What are the benefits of increasing community resilience?

**Emergency**

**Planning**

**Team**

- Greater understanding of risks + emergency planning
- Know what actions to take before, during + after
- Reduced exposure to risks
- Increased confidence to take action
- Recovery process is quicker
- Stronger sense of community spirit
- Sharing of existing skills, knowledge + resources
- Partnerships between community + local responders
- Improved understanding of our communities
- Prioritisation of our resources
- Reduced levels of panic
- Reduced demand on local services





---

# Why should we assist with developing community resilience?

Emergency

Planning

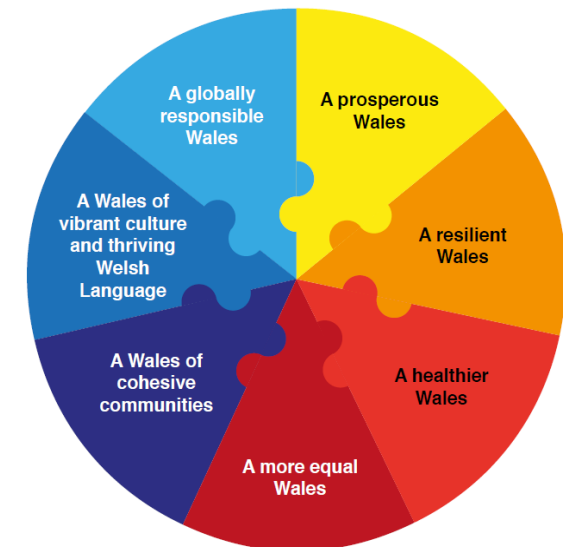
Team

## Legislation:

- The Civil Contingencies Act 2004 (CCA)
- The Control of Major Accident Hazard Regulations 2015 (COMAH)
- Radiation Emergency Preparedness & Public Information Regulations 2001 (REPPIR)
- The Pipeline Safety Regulations 1996
- The Well-being of Future Generations (Wales) Act 2015

## Other links:

- Welsh School Curriculum
- Education for Sustainable Development and Global Citizenship
- Child Poverty Strategy for Wales
- The National Youth Work Strategy for Wales 2014 - 2018



---

# Aims of the strategy





**Emergency**

**Planning**

**Team**

# Thank you

